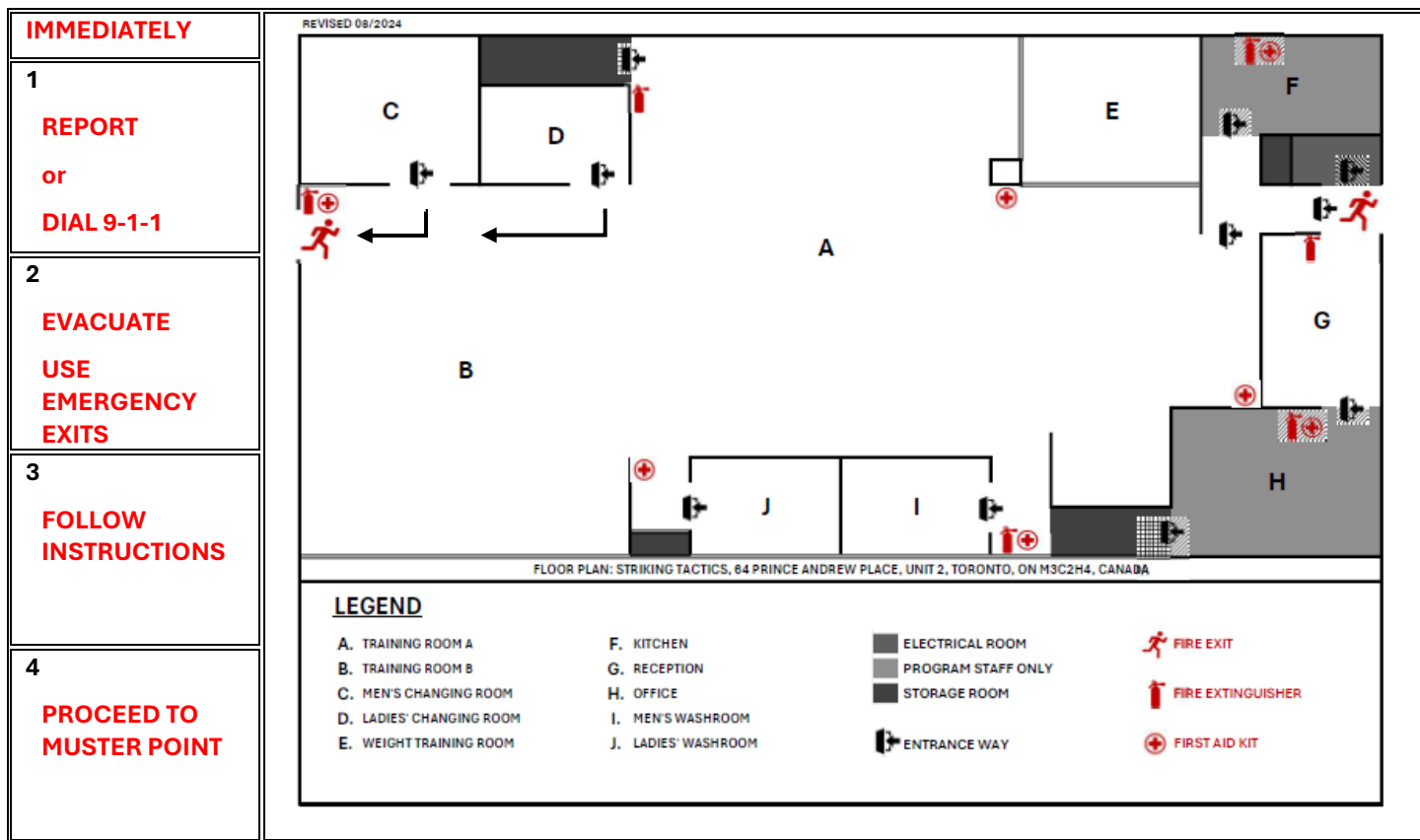
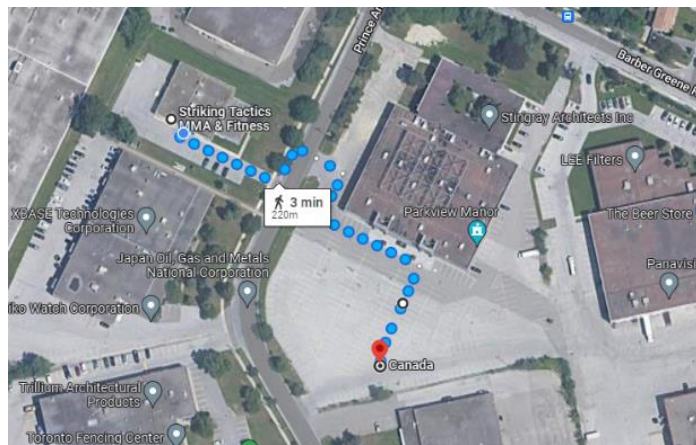
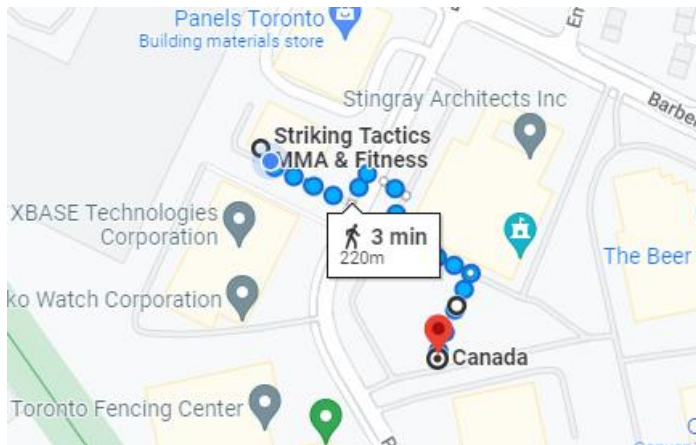


## EMERGENCY EVACUATION PLAN: 64 Prince Andrew Place, Unit 2, Toronto ON



### MUSTER POINT:

**Parkview Manor, Parking Lot (220 meters)**

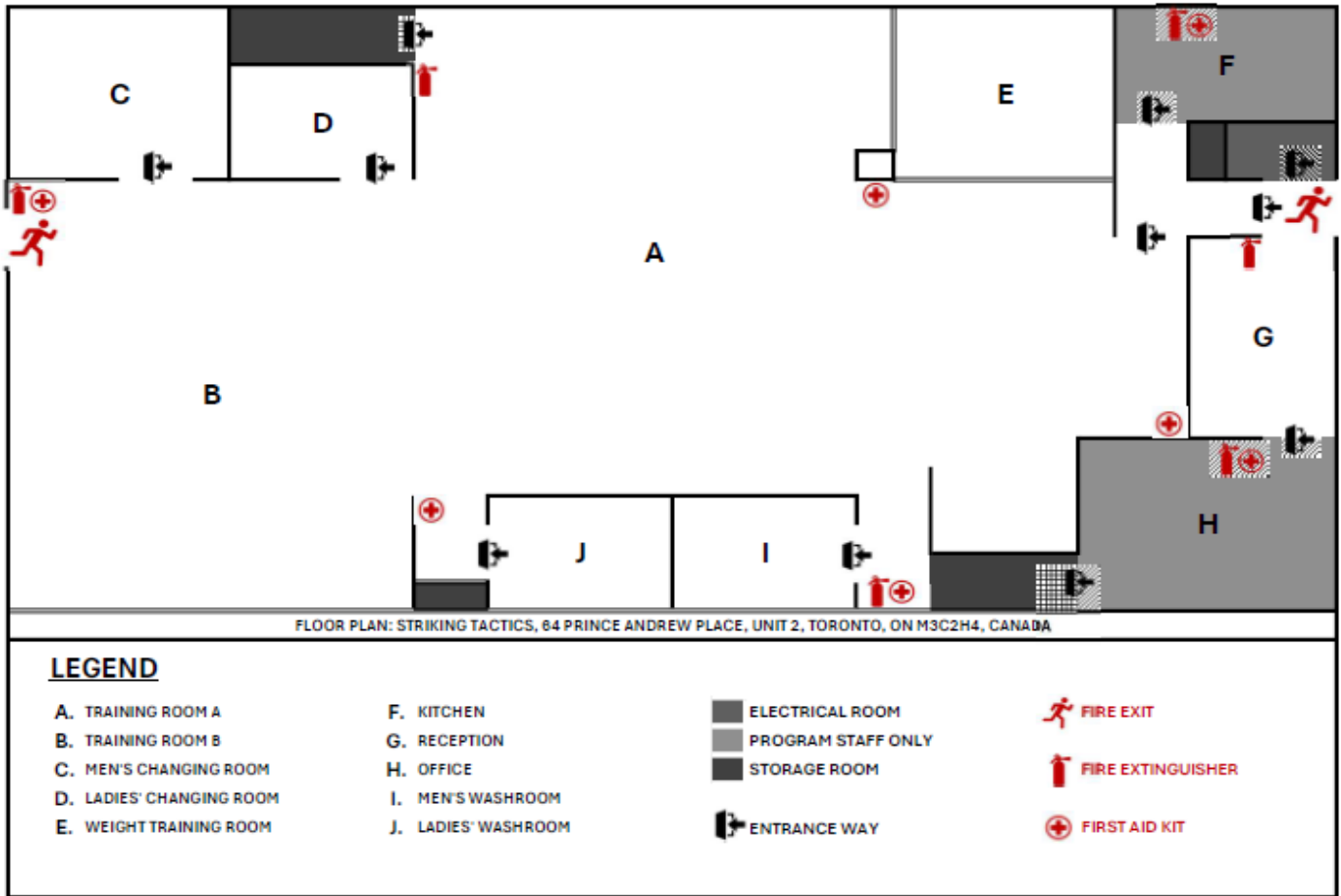


### EMERGENCY CONTACT INFORMATION:

TORONTO PUBLIC HEALTH	416-338-7600	MAINTENANCE	647-577-2743
COVID-19 INFORMATION LINE	1-800-465-7735		
ONTARIO POISON CONTROL	416-813-5900		
FIRESTATION 123 143 Bond Avenue, Toronto ON M3B1M1	416-392-2489	CERTIFIED FIRST AID	
		Pauline Ng, First Aid & CPR/AED Level C & BLS (HCP) St. John Ambulance, Certificate #: 2088165505, Exp: 2027-02-10	
SUNNYBROOK HEALTH SCIENCES CENTRE		Kevin Velinor, First Aid & CPR C Vital Signs, Exp: 2025-05-06	
2075 Bayview Ave, North York, ON M4N 3M5	416-480-6100	Marco Attanasi, First Aid & CPR/AED Level C Canadian Red Cross, Certificate #: 104565739, Exp: 2026-11-18	

## FIRE EXTINGUISHERS AND FIRST AID KITS

REVISED 08/2024



### FIRE EXTINGUISHER INSTRUCTIONS

#### 1. PULL THE PIN:

Start by pulling the pin located at the top of the fire extinguisher. This will break the tamper seal and allow you to discharge the extinguisher.

#### 2. AIM AT THE BASE OF THE FIRE:

Point the nozzle or hose at the base of the fire, not at the flames themselves. This is where the fuel source is located and targeting it will help extinguish the fire.

#### 3. SQUEEZE THE HANDLE:

With one hand holding the nozzle/hose and the other hand on the handle, squeeze the handle to release the extinguishing agent.

#### 4. SWEEP FROM SIDE TO SIDE:

While continuing to aim at the base of the fire, sweep the nozzle or hose from side to side to cover the entire area of the fire with the extinguishing agent.

#### 5. WATCH FOR RE-IGNITION:

After the fire appears to be out, watch for any signs of re-ignition. If the fire reignites, repeat the process or evacuate the area if necessary.